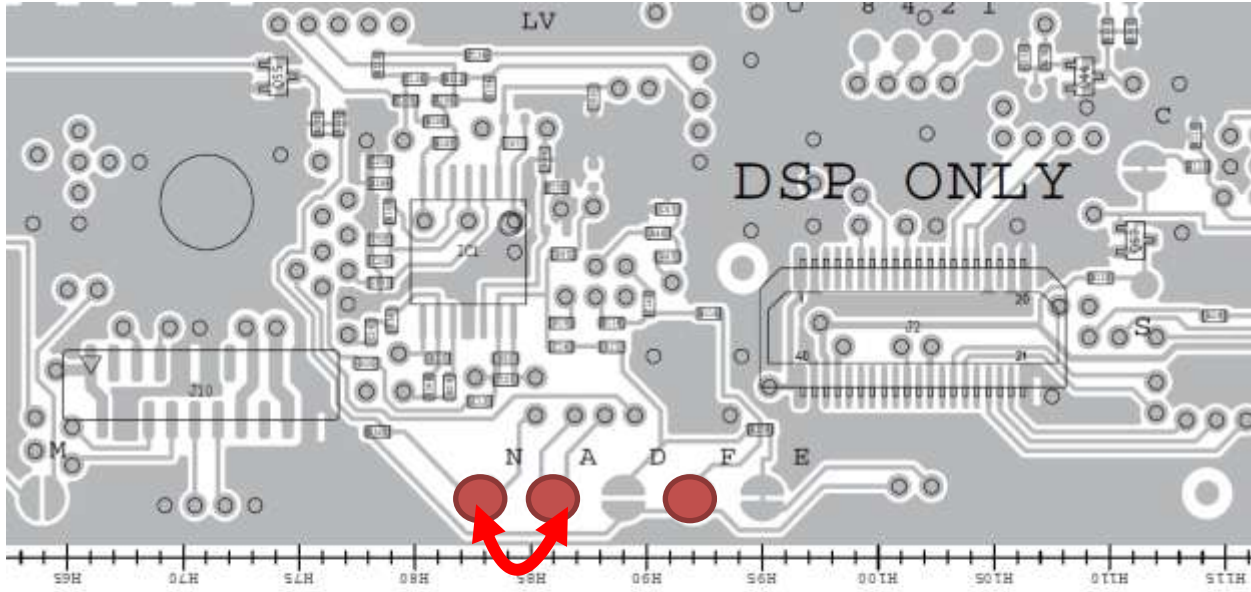


Icom IC-F5061/6061 Footswitch Mods

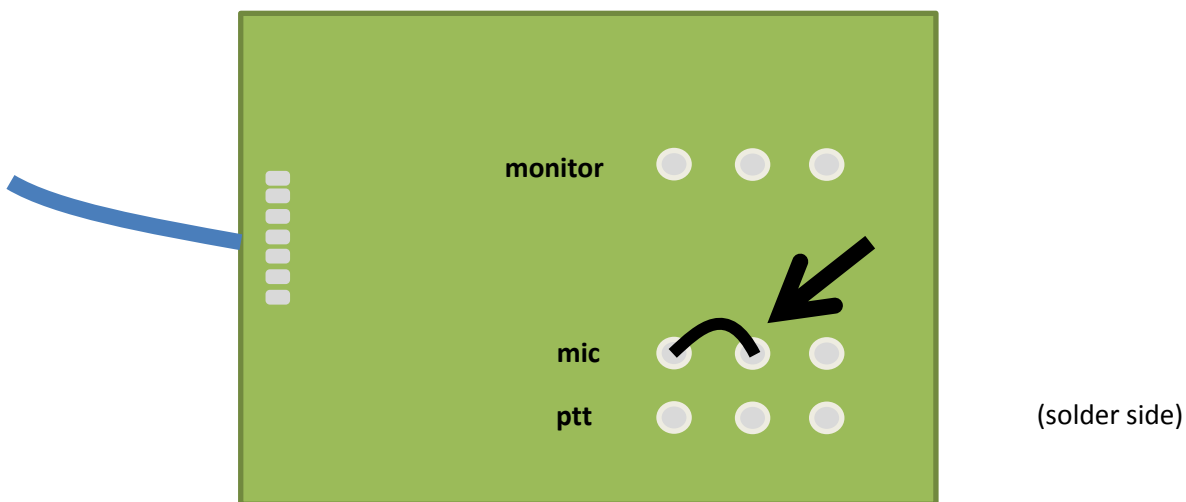
Max Kelley, TADA Communications
585-342-0716

A standard footswitch was connected via DB25 pins 14(GND) and 19(EPTT). The footswitch should be wired to short these pins when depressed (NO and COM).

Coffeebeans A, N, and F were shorted and coffeebeans A & N were jumpered together.



Desk microphone SM-26 is plugged into the front microphone jack, and the microphone was modified to leave the mic line unswitched (connected to the mic element all the time.) On the bottom of the PCB inside the SM-26, the following wire jumper was installed:



Volume adjustment was turned up all the way on the bottom of the microphone (counterclockwise) and mic gain on the radio was set to 5 to accommodate the dispatchers.